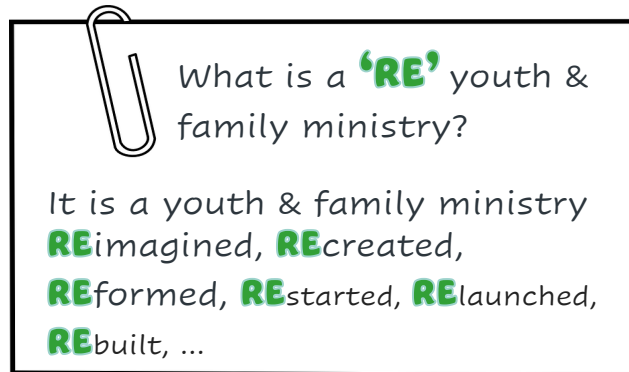
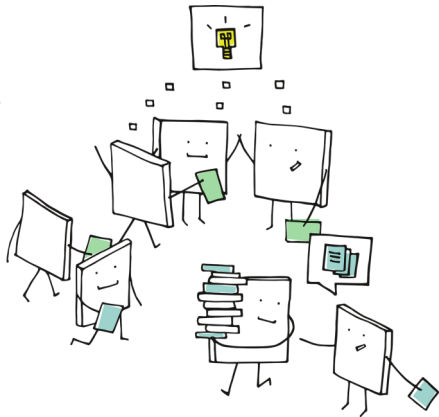


---

**purposefully  
prepare for a 'RE' youth & family ministry!**



---

Join this training to

- Become familiar with a proven launch process
- Learn how to include the four foundational S's of a solid youth ministry
- Design an evaluation process to keep connected to youth and their families and to use it to direct the on-going evolution of youth ministry
- Hear what other ministries are doing.

-----  
Training consist of instructional videos paired with a weekly Zoom gathering.  
-----

All on the Ministry Team are encouraged to participate in this online training. The information presented is for Ministers; Board Members; CSE Credentialing Candidates; Youth Directors; Y.O.U. Sponsors, Uniteen Leaders; Teachers and Parents.

**Register your team at [www.greatlakesunity.com/calendar-yfm-events-trainings](http://www.greatlakesunity.com/calendar-yfm-events-trainings)**

**by Wed. May 4, 2022.**

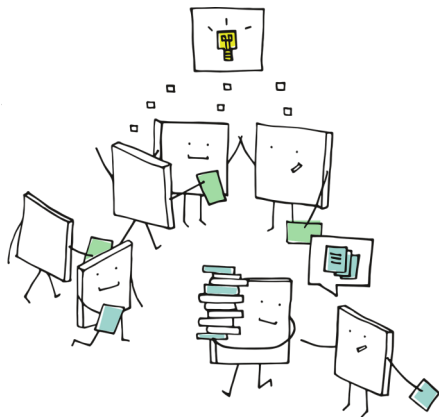
\$30.00 per person or \$75 for a team of three or more.

For more information contact Rev. Chase:

937-242-8180 or [yfmd@greatlakesunity.com](mailto:yfmd@greatlakesunity.com)

---

purposefully prepare for a **'RE'** youth & family ministry!



What is a **'RE'** youth & family ministry?

It is a youth & family ministry  
**RE**imagined, **RE**created,  
**RE**formed, **RE**started, **RE**launched,  
**RE**built, ...